

Youngs Creek Trail



USDA Forest Service

Hoosier National Forest

7/2009

Description

Approximate Length: 12.7 miles

Type: Hiking, horse riding and mountain biking.

Special Features: Shady trails, scenic hardwood forest and a variety of terrain.

Etiquette and Rules

Horse riders and mountain bikers (age 17 years and older) are required to have a permit and stay on trails designated for that type of use. Permits are available from our offices and local vendors.

Observe the following trail courtesy:

- Mountain bikers yield to horse riders and hikers. Make your approach known in advance.
- Hikers yield to horse riders.
- Horse riders control your horse.
- Pack out your trash.

Motorized travel is not permitted.

Safety

Use caution during hunting seasons. Blaze orange clothing is recommended during deer season (do not wear white).

If a parking lot is not available where you wish access, be sure your vehicle is well off the road. Many trails intersect roadways. If you choose to use a road as part of your trip, be mindful of traffic.

Ticks and chiggers are common. Take necessary precautions including avoiding tall grass and thick brushy areas.

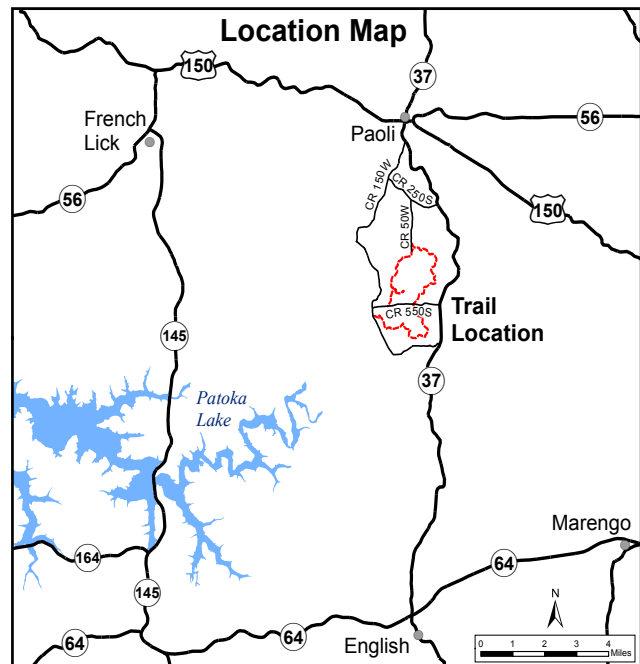
Loose limbs and hazard trees can fall on the trail at anytime, especially on windy days.

Emergencies

- Nearest public phone is in Paoli
- The nearest hospital is located in Paoli, IN.
- Orange County Sheriff: 812-723-2417/ 911.
- Indiana Conservation Officers: 812-837-9536.

Facilities

A primitive campground with pit toilets (accessible for persons with disabilities), hitching racks and a picnic shelter is available. Though designated for horse camping, any National Forest visitor is wel-



come to camp at no cost. Day use parking at the trailhead is also free.

Directions

To get to the trailhead and camping area from Hwy 37, turn onto County Road 250 S. and proceed 0.9 miles to brown FS sign. Turn left onto 50W and drive 1.2 mile, camp is on the left side of road.

For the other parking area turn onto County Road 550 South from Hwy 37 at the Pine Valley Store. Proceed 0.8 mile to the parking area on the right.

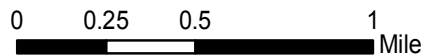
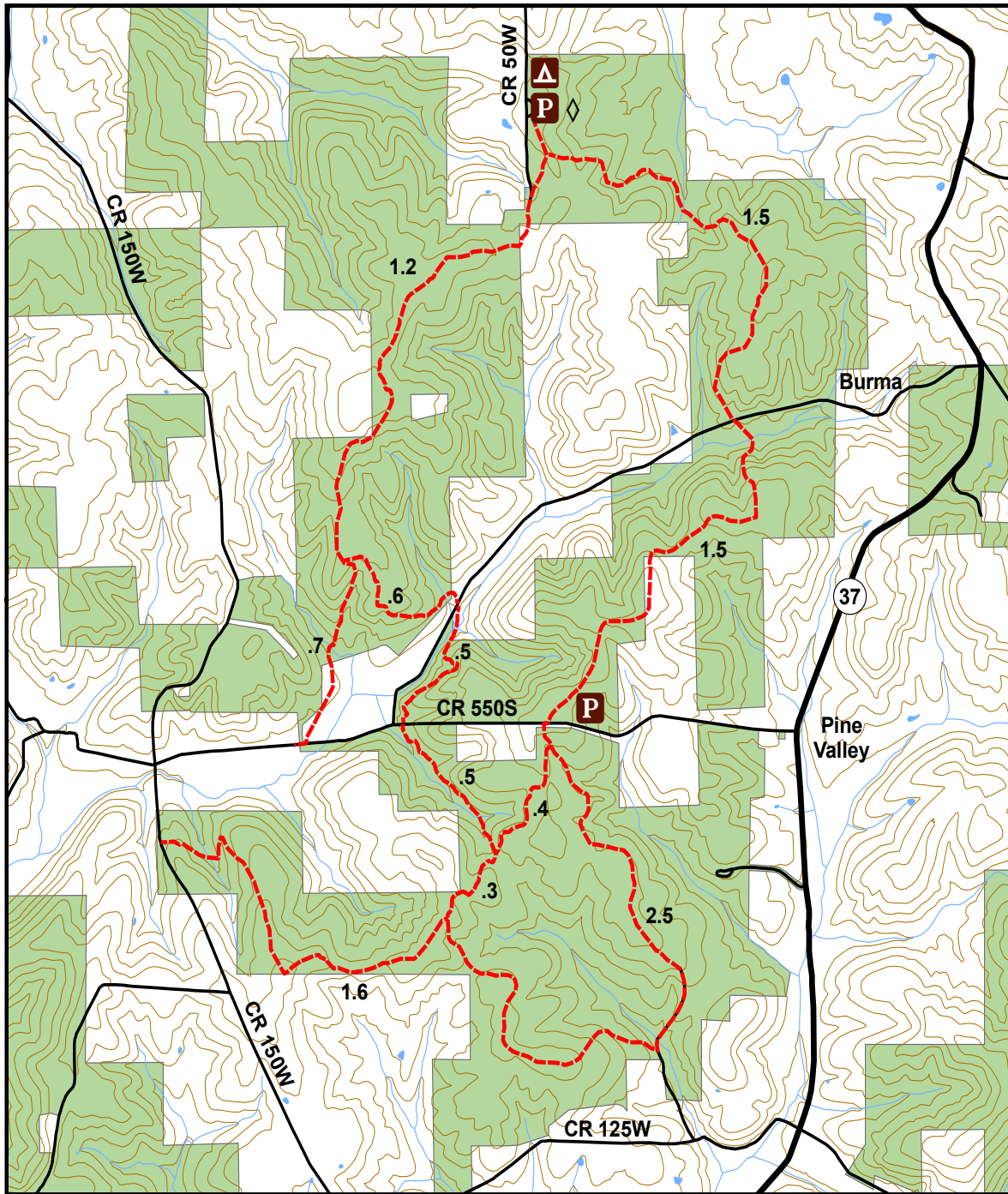
For More Information

Hoosier National Forest
248 15th Street
Tell City, IN 47586
(812) 547-7051
Toll Free: 1-866-302-4173
www.fs.fed.us/r9/hoosier

Federal Relay Number for the deaf and hearing impaired is: 1-800-877-8339

USDA is an equal opportunity employer and provider

Youngs Creek Trail



Look for these symbols to be sure you are on an official trail:

- Colored Dot or Diamond
- ◇ Diamond
- Post with decals

Trails may be color coded to indicate use type:

- Blue - Hiking, Mountain Bike, and Horse Riding
- Yellow - Hiking and Mountain Biking Only
- White - Hiking Only
- Orange - Connector Trail



Legend

- Trail
- Road
- Stream
- Contour Line
- Horse Trailer Parking
- Water
- Forest Service
- .2 Miles Between Intersections
- Camping
- Parking